

THE UNIVERSE PROJECT

TAKING THE EDGE OFF INFINITY



2007 - 2010

JOHANNA THOMPSON

INTRODUCTION

We fear what we do not comprehend and few things are as incomprehensible and fear inducing as the concept of infinity. Imagining one infinite universe was difficult enough. But real anxiety is caused by the recent claim that our universe is only one of many coexisting ones. Suddenly humankind is reduced to such frighteningly small insignificance that the recent turn to organized religion comes as no surprise.

THE UNIVERSE PROJECT seeks to promote a better understanding of the incomprehensible. By putting things into perspective, into an alternative and for human beings more palatable form, it is designed to relieve unreasonable fears and eliminate the need for rash, panic induced actions.

The universes are expanding and contracting. Some increase in size, others perish. Just like people and businesses. Universes are connected by wormholes, or 'rotating black hole probabilities.' Not only are these wormholes connections from one universe to the next, they are also hailed as shortcuts for their ability to fold time and space. It is only possible to travel through a wormhole if it is stabilized with exotic matter, for these phenomena are intrinsically unstable and would be destroyed by our entrance. But even if we could travel through a wormhole, the radiation would kill us.



Universe Project: Lost Picasso • mixed media • 130cm x 100cm • 2007¹

These drawings are based on a basic Universe expansion cycle, and illustrate the opportunities and perils of Inter-Universe travel.



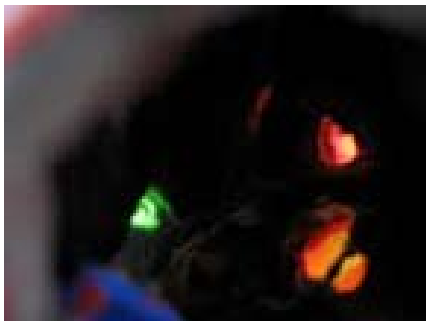
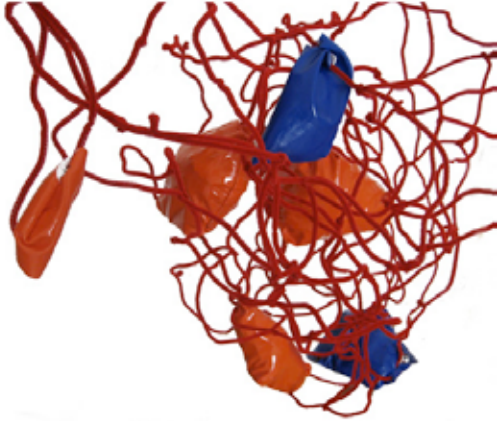
Universe Project: Universes • chalk on paper • 100cmX140cm • 2007²

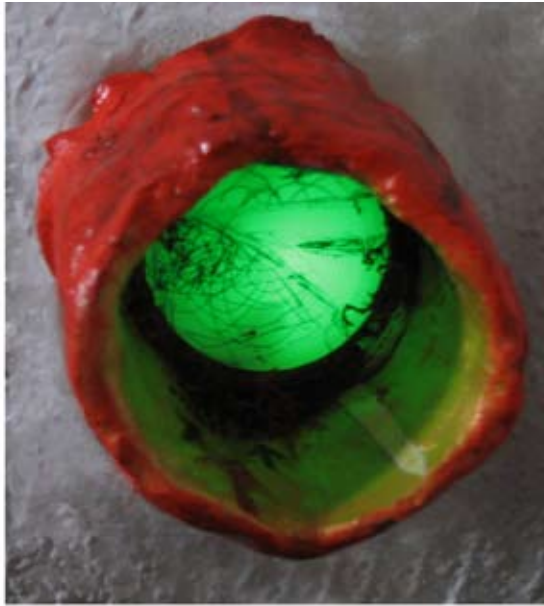
Black holes can be deceptive. They are harmless, unless one gets too close, but if one does get too close the gravitational forces will tear them apart. Nobody in their right mind ever would go near one and so it is inevitable that a certain bait or siren lures travelers into black holes, and hence, to their doom.



Universe Project: Loreley • mixed media • 45cm x 60cm • 2007³

These pocket-sized models are finite representations of infinity. No two universes are alike, although some might share a number of features. Some theories employ a Darwinian approach and argue, that not all universes develop successfully into full blown systems. There are models of “failed” universes as well. The most interesting part of the universes is of course the interior.





Universe Project: Patriotic Wormholes • wall objects • 10cmX10cm • 2007

One of the most fascinating features of the universes are certainly the wormholes, the gateways connecting them. They offer the possibility of accelerated travel, shortcuts through galaxies, maybe even time travel. Remember that travel is only possible if the wormhole is stabilized with exotic matter and even then it is risky. These wall pieces remind us that we never know, where an entrance into another system might be available.



Universe Project: Wormholes • wall objects • 10cmX10cm • 2007

There is a metaphysical, darker side to this project. We said that the universes are infinite, each one of them. But it has probably already occurred to you, that another important question has yet remained unanswered. The question of what might lie in between them? And the answer seems obvious: between the universes there must be God.



Universe Pricject: triptych • acrylic, mixed media • 140cm x 60cm • 2007²

This triptych tries to depict the metaphysical implications of the multiverse theory: the first panel shows the multitude of scientific evidence and again inter-universal travel gone wrong. The perspective is nonlinear and multi layered.

The main panel offers a straight on view of the universes, the gold background indicates the presence of a higher power and again there is an example of baits and traps in black holes. The third panel is shifting views again and offers the point of view onto another universe when being sucked into a black hole/ wormhole. Gravity grows to infinity and tears the traveler apart.

Miniature Universe Models and small icons are designed to be very affordable and are furnished with images from Ikea catalogs. For a full line of currently available items please visit:

www.johannathompson.info/universes
and
<http://universesforall.blogspot.com/>



Universe Project: emptiness • chalk on paper • 100cm x 100cm • 2007

FURTHER READING:

<http://www.pbs.org/wnet/hawking/strange/html/wormhole.html>

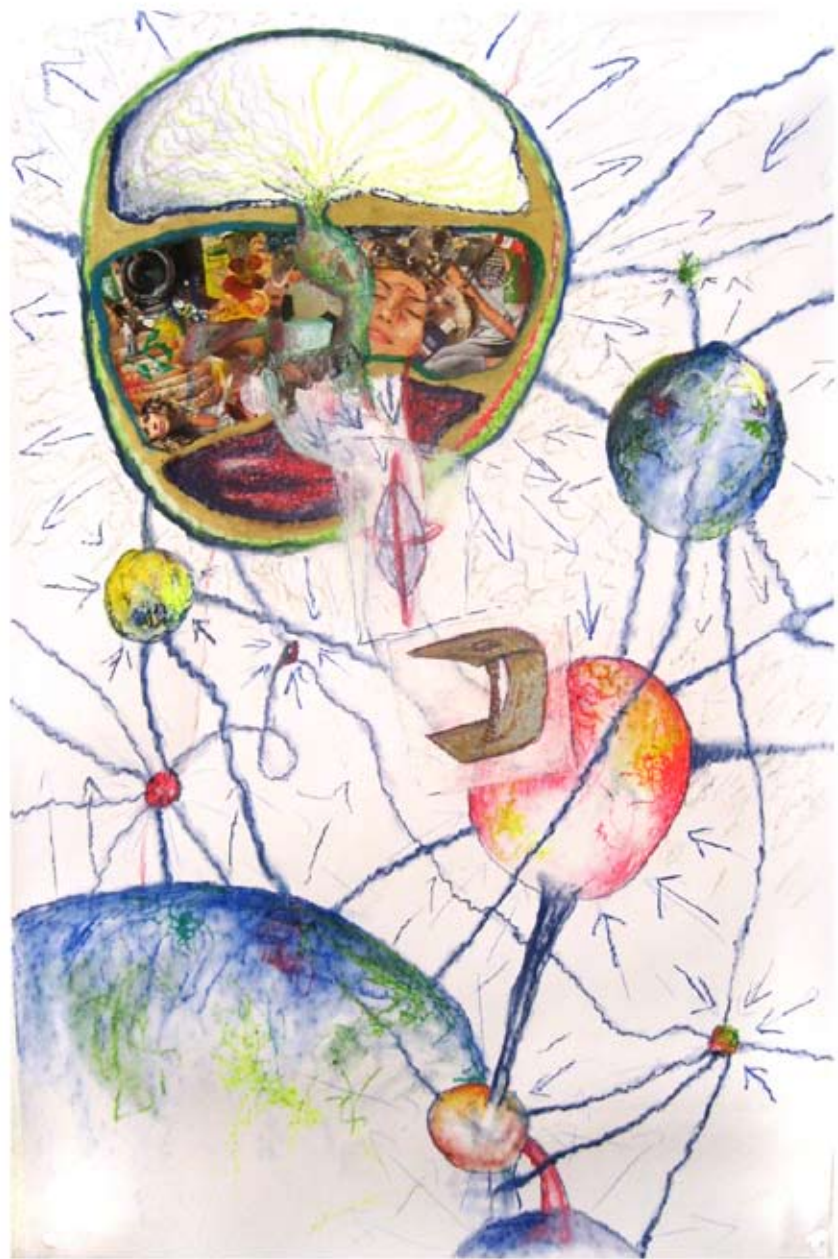
<http://www.bbc.co.uk/science/horizon/2001/parallelunitrans.shtml>

<http://casa.colorado.edu/~ajsh/schw.shtml>

<http://www.mkaku.org/>

http://www.lifesci.sussex.ac.uk/home/John_Gribbin/timetrav.htm





Universe Project: Shamanic Universe • chalk on paper • 140cmx100cm • 2008



3



6

4



5



6



7



8





IMAGE GALLERY

SPECIAL EDITION

- Icon 1 - APO - mixed media on canvas - 6 x 10 - 2008
- Icon 2 - them - mixed media on canvas - 10 x 10 - 2008
- Icon 3 - fig.1 - acrylic on canvas - 10 x 10 - 2008
- Icon 4 - green world - mixed media on canvas - 10 x 10 - 2008
- Icon 5 - a hole - acrylic on canvas - 10 x 10 - 2008
- Icon 6 - fullness - mixed media on canvas - 10 x 10 - 2008

UNIVERSES 3.0

- 1 - Universes 3.1 - acrylic on canvas - 50 x 70 - 2010
- 2 - Universes 3.4 - acrylic on canvas - 60 x 80 - 2010
- 3 - Big Bang 1 - gold and acrylic on canvas board - 15 x 10 - 2010
- 4 - Big Bang 6 - acrylic on paper - 100 x 70 - 2010
- 5 - Green Men - acrylic on canvas board - 25 x 40 - 2010
- 6 - More Green Men - acrylic on canvas - 70 x 50 - 2010
- 7 - Big Bang 5 - acrylic on postcard - 15 x 10 - 2010
- 8 - Universes 3.5 - acrylic on canvas - 80 x 60 - 2010
- 9 - Big Bang 2 - acrylic on paper - 15 x 10 - 2010
- 10 - Universes 3.2 - acrylic on canvas - 50 x 70 - 2010
- 11 - Big Bang 4 - acrylic and ink on paper - 15 x 10 - 2010
- 12 - It's Complicated - ink and watercolor on paper - 75 x 110
- 13 - BigBang 8 - acrylic on canvas - 70 x 50 - 2010
- 14- Big Bang 3 - acrylic on paper - 17 x 11 - 2010

COLLECTORS

Bernd Schoner and Mary Farbood, New York, USA ^(1,3,5)

Claudia Kilian, Weilburg, Germany ^(2,8)

Sandra Müller, Berlin, Germany ⁽⁶⁾

Jean Griffin Borho, JGB Berlin, Berlin, Germany

Ryan Callahan, Phoenix, Arizona ⁽⁷⁾

Dr. Manoj Nardkani, Mumbai/Berlin

Adam Odgers, Berlin ⁽⁴⁾

Lea Nicholson, Cambridge, UK

Heike Sommerfeld, Berlin, Germany

“Universes” 2007 was used as the cover of

“Muster der Menschheit” by Claudia Kilian

Verlag Neckarwiese, 2008

